



Reeco

Reeco

REECO Robots

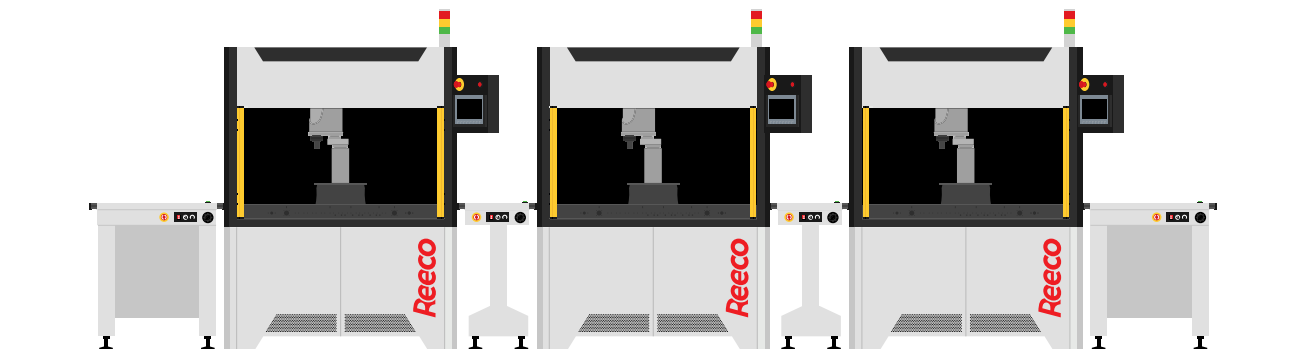
READY TO USE SOLUTIONS

REECO Robots do not require any complicated planning or integration and can be easily integrated into a production process. They allow companies with little to no automation experience to utilize modern robotic solutions.

QUICK RETURN ON INVESTMENT

REECO Robots have been designed to allow even small and medium sized companies to automate their processes. Although they use highest quality materials and components, they are characterized by low initial investment and low maintenance costs.

The manufacturer of the robots is Yamaha, whose representative in Poland and the Balkan countries is RENEX.



SMEMA communication allows several machines to work in line.

Reeco



MADE FOR YEARS OF OPERATION

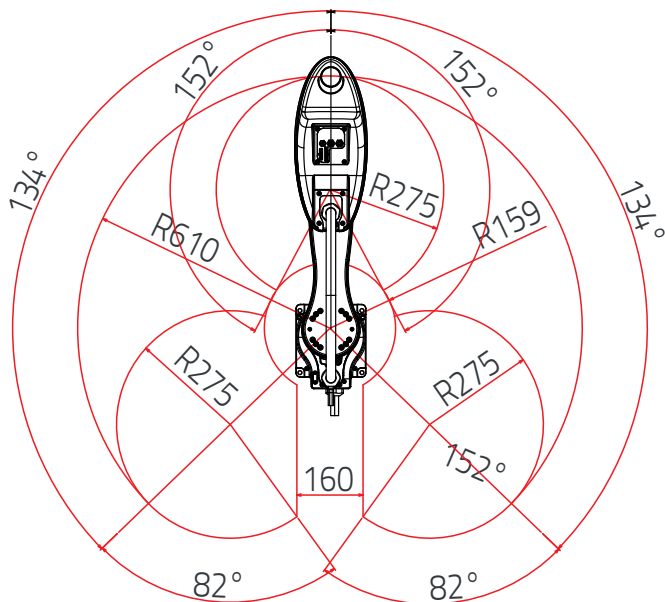
REECO Robots have been designed and made for high intensity industrial operation. Robust materials and highest quality components allow for years of low maintenance operation.

QUALITY AND REPEATABILITY

Thanks to the use of YAMAHA SCARA robotic arm REECO Robots achieve high repeatability of operation. Each task is performed with the same precision and level of quality.

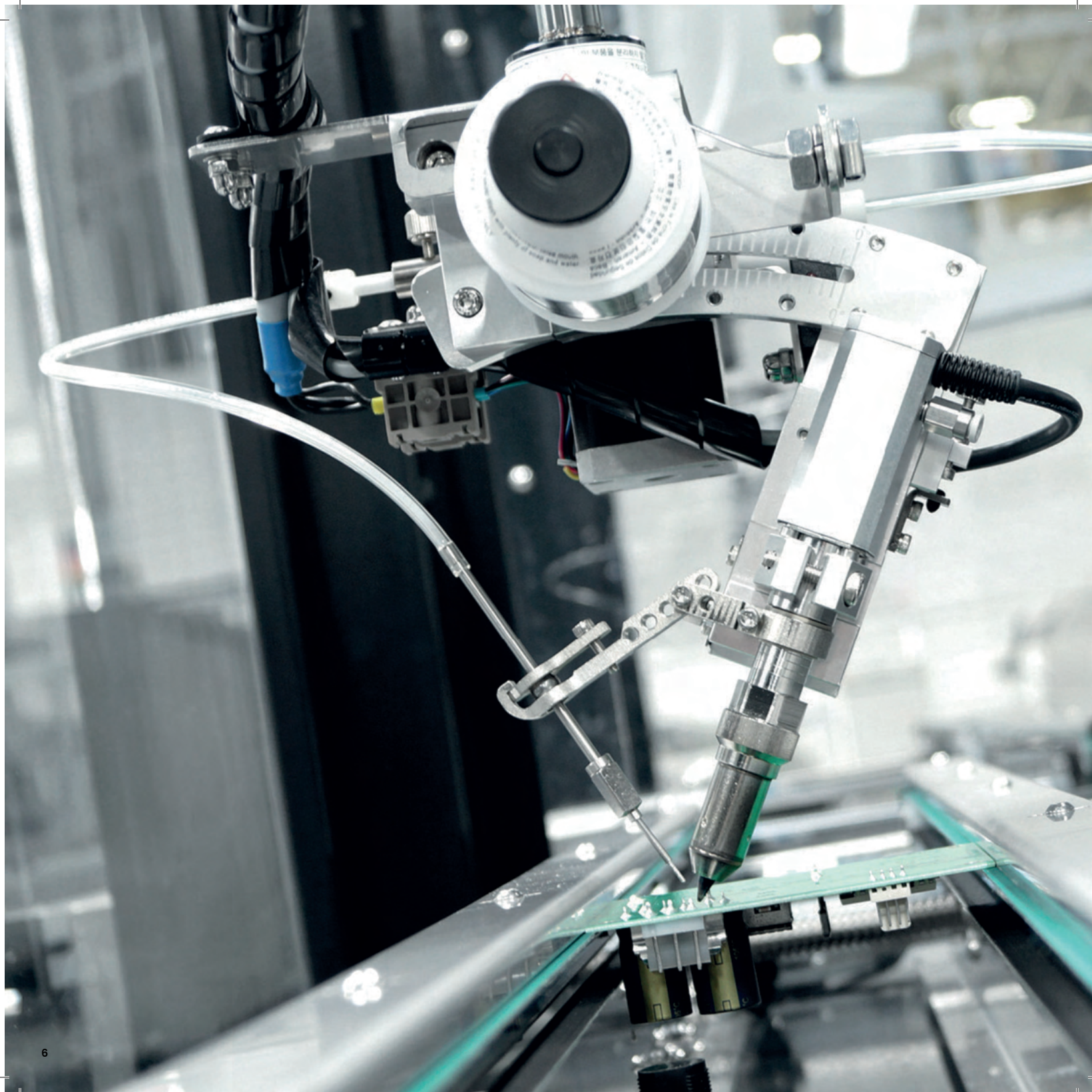


Reeco



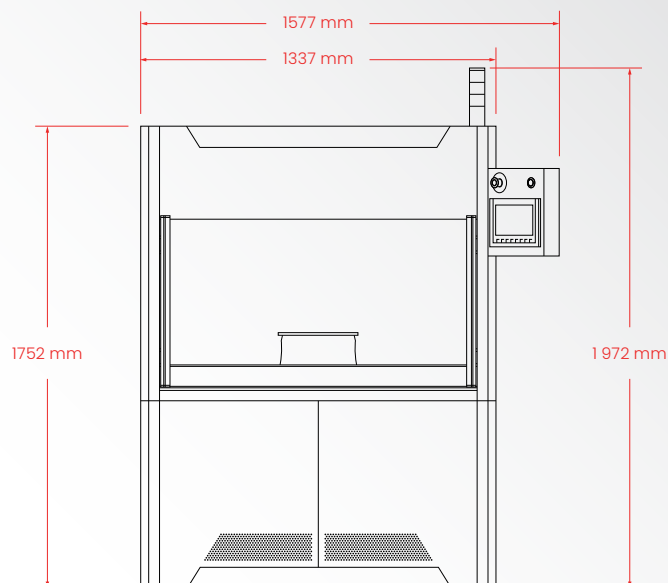
	X axis	Y axis	Z axis	R axis
Range	R 610 mm			
Arm length	335 mm	275 mm	200 mm	-
Available rotation angle	+/-134°	+/-152°	-	+/-360
Servo Power	400W	200W	200W	200W
Repeatability*	+/-0.01 mm	+/-0.01 mm	+/-0.01 mm	+/-0.01°
Maximum speed	8.6 m/s	8.6 m/s	2 m/s	2600°/s
Maximum load	10 kg			
Weight	25 kg			

* With a constant ambient temperature

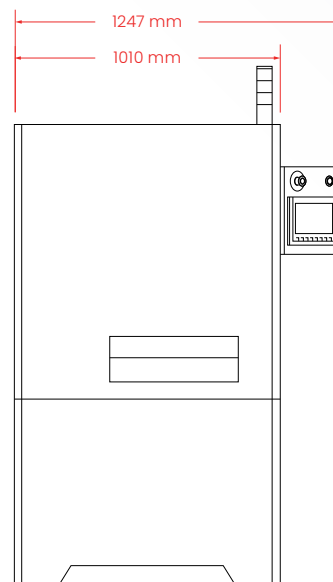




Front



Side

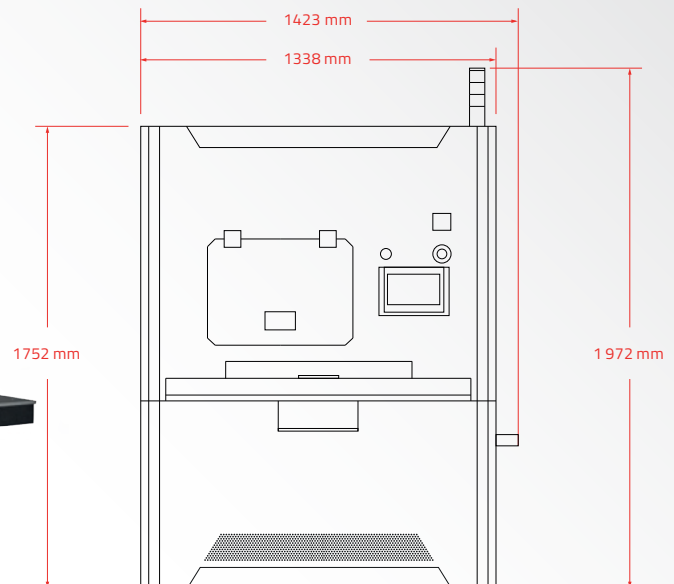


EDGE CONVEYOR

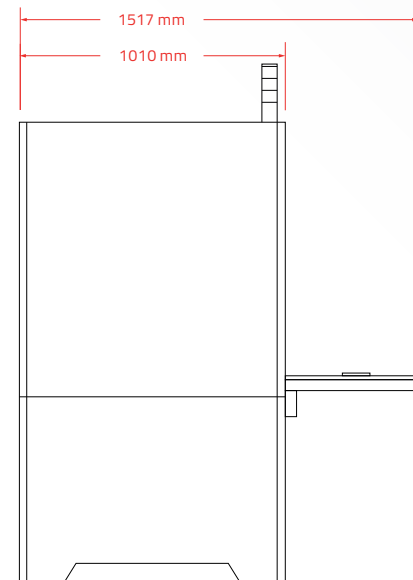
This version of REECO Robots was developed for inline use. The machines can be set up in series or combined with other types of equipment. The robots are equipped with standard SMEMA system allowing for easy connection.



Front

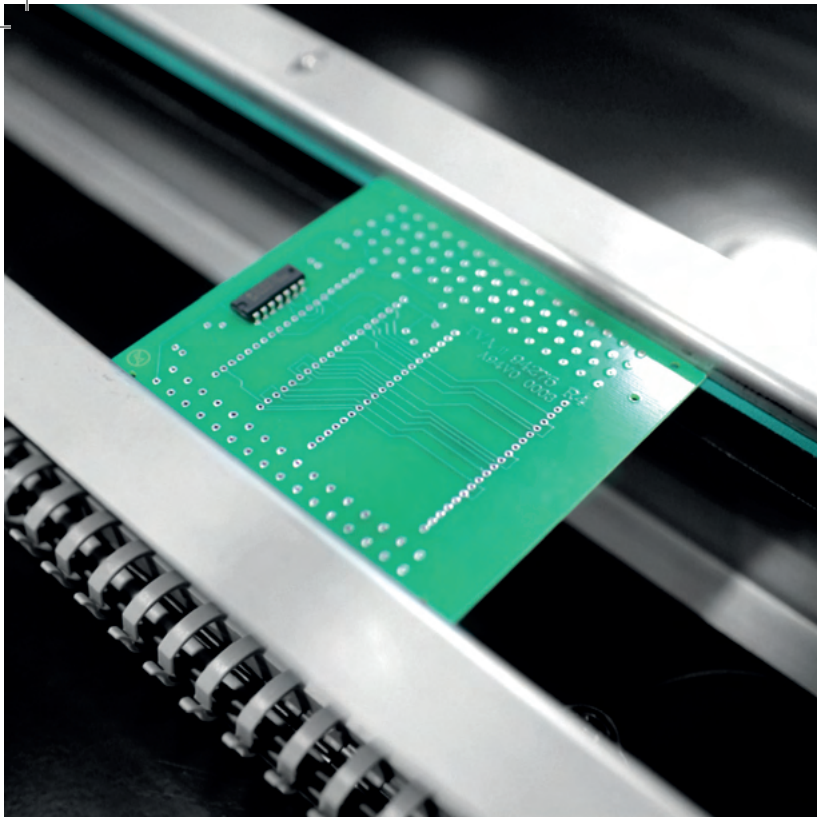


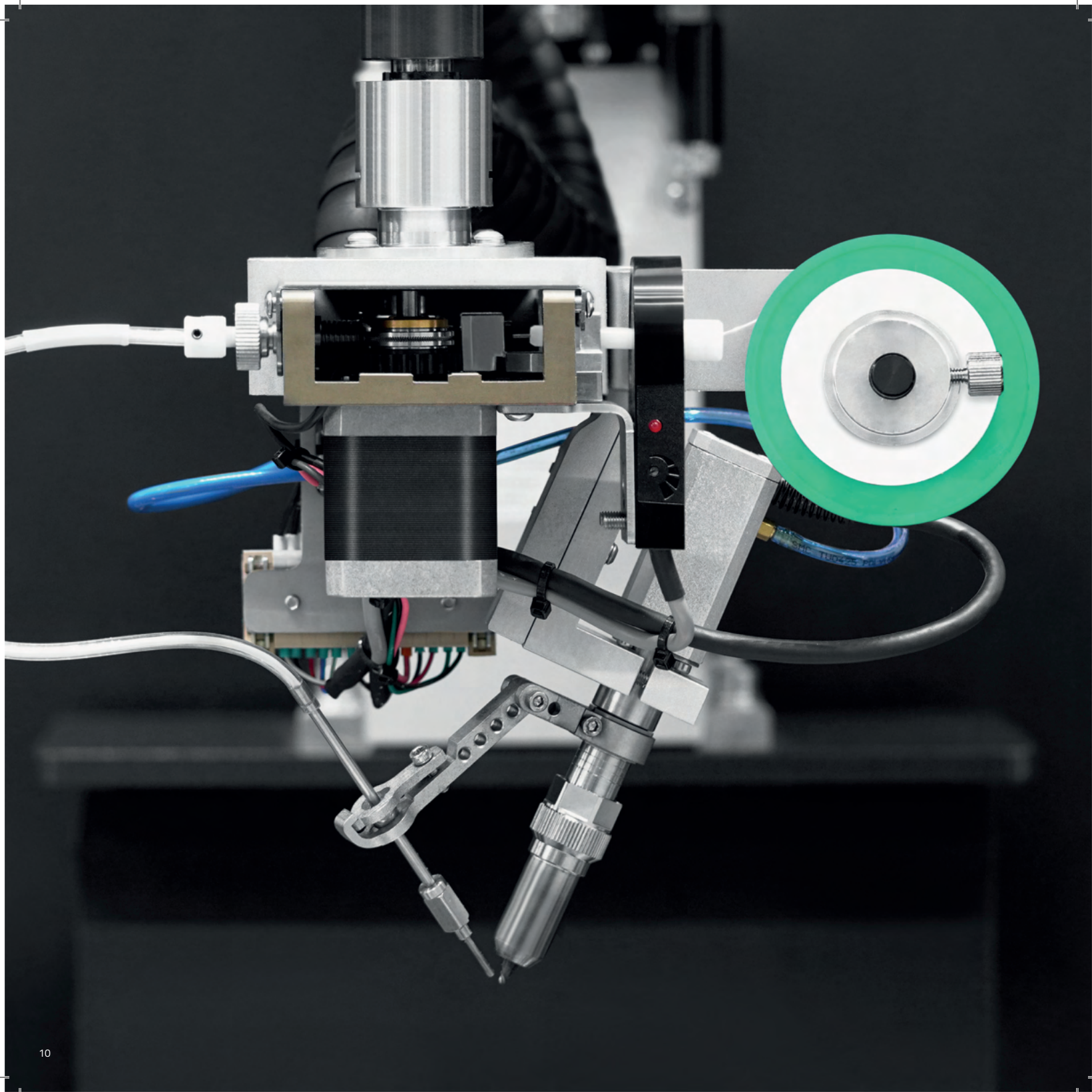
Side



ROTARY TABLE

The solution was developed for situations in which REECO Robots are used offline. It enables ergonomic manual insertion of a workpiece (e.g.PCB) into the work area. While work is performed on one side of the rotary table, the operator can safely use the other side to prepare the next workpiece allowing for uninterrupted workflow.





Soldering Robot

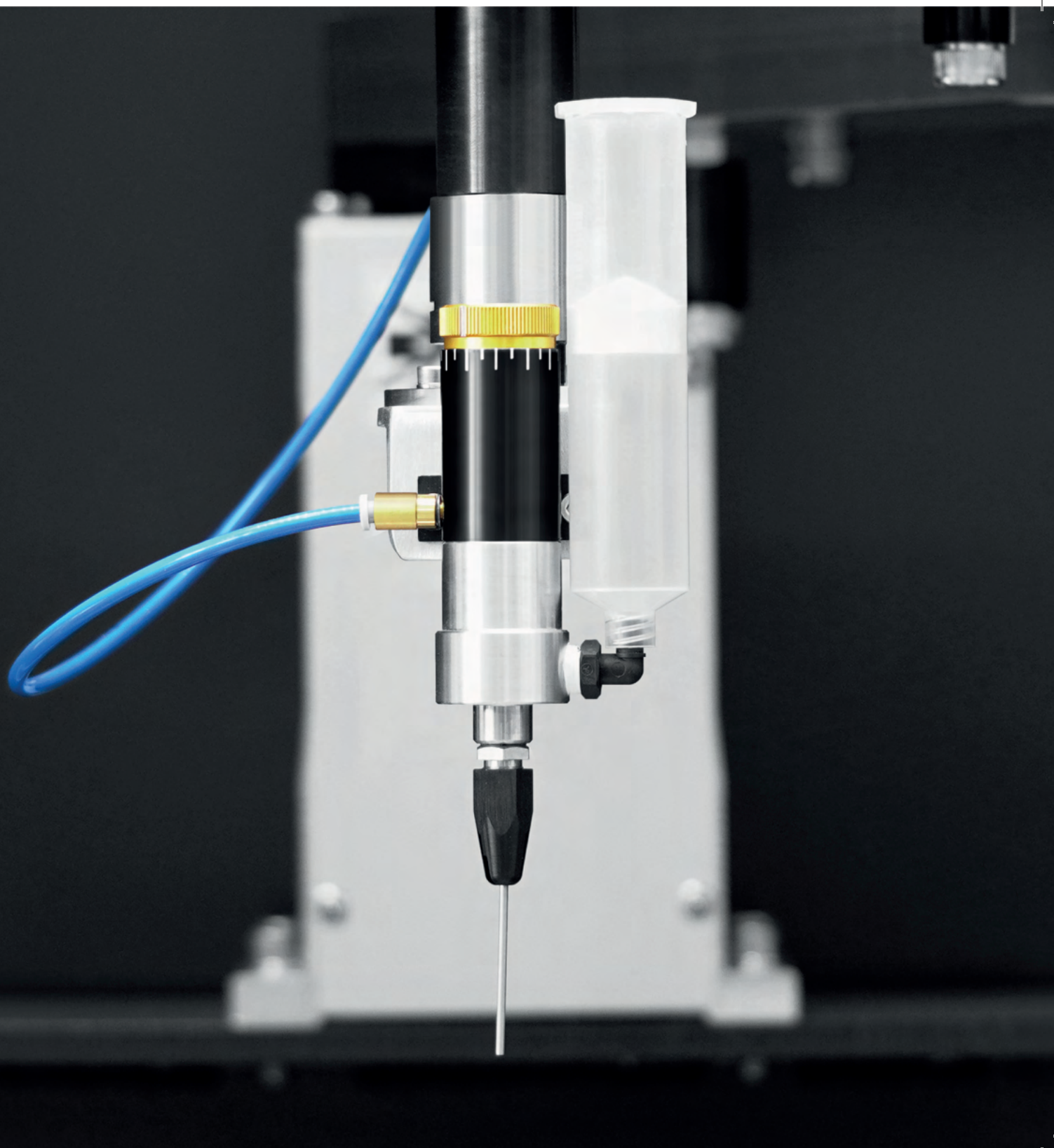
Technical specification

- Automatic mechanical workpiece positioning
- Process parameters controlled by the PLC
- Solder feeder with feeding profile configuration
- Mechanical solder tip cleaner
- Possibility to control the soldering profile for each point
- Automatic calibration of the soldering tip position

Options

- Vision system for workpiece positioning
- Vision system for soldering quality control
- Statistical data gathering
- Traceability
- Nonstandard diameters of solder wire
- Nitrogen shielding
- More than 40 different types of soldering tips available

Standard diameters of soldering wire	0.8 mm 1.0 mm 1.2 mm
Supported applications	Width: 350 mm Length: 420 mm
Larger systems are available upon individual request	



Dispensing Robot

Technical specification

- Automatic mechanical workpiece positioning
- Possibility of dispensing various mediums: including adhesives, acrylics, silicones
- Wide range of containers, pumps and valves available
- Possibility to control the dispensing profile
- Automatic calibration of the tool position

Options

- Vision system for dispensing quality control
- Two-component mixing system
- Progressive cavity pump
- Statistical data gathering
- Traceability
- Monitoring of the dispensing profile (measurement of medium flow)

Supported applications	Width: 350 mm Lenght: 420 mm
Larger systems are available upon individual request.	



Screwdriving Robot

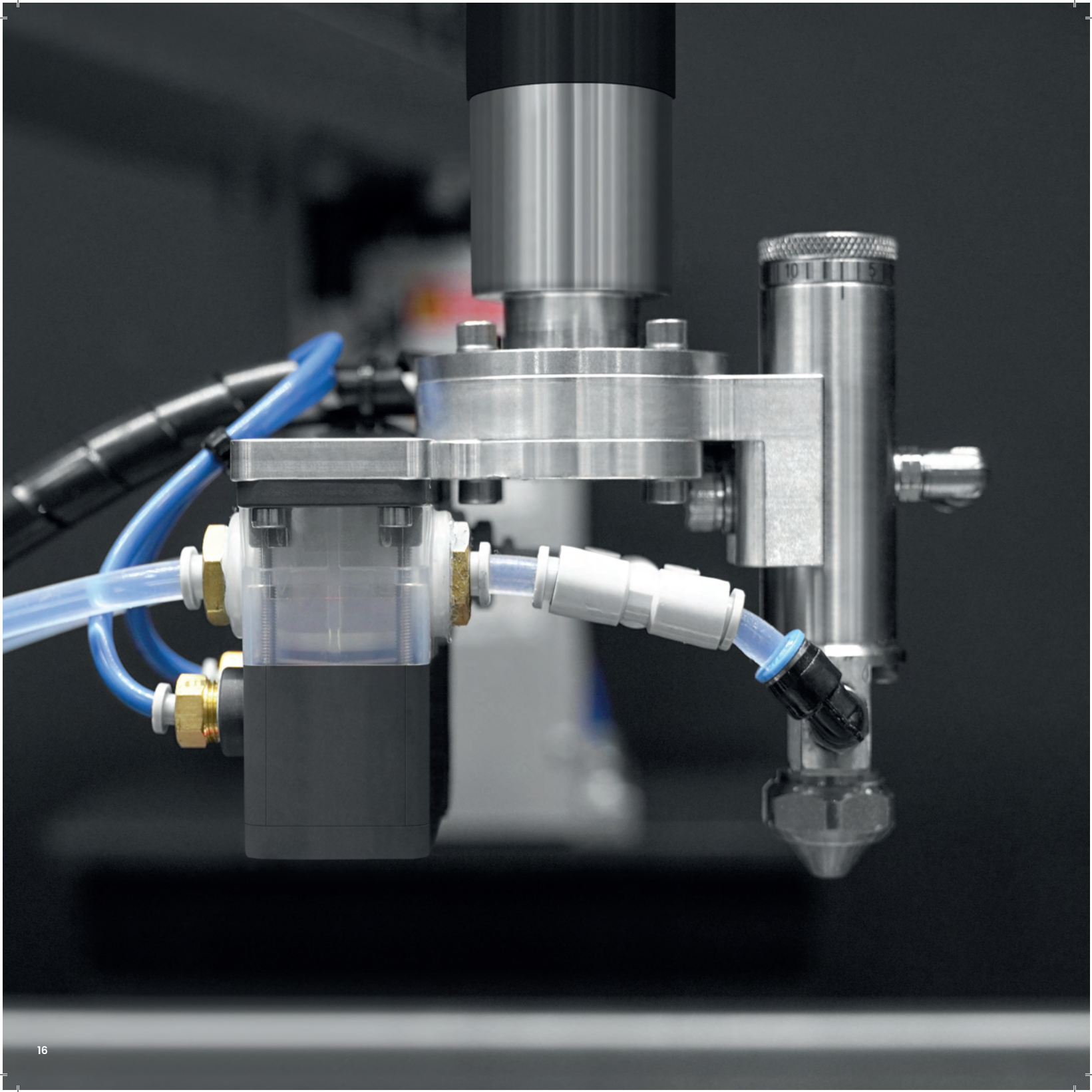
Technical specification

- Automatic mechanical workpiece positioning
- Automatic screw feeder
- Vacuum pick up system
- Torque control
- Automatic calibration of the tool position

Options

- Vision system for workpiece positioning
- Vision system to ensure the presence of screws after the process
- Screwdriver with two torque converters
- Several screwdriving profiles
- Statistical data gathering
- Possibility to control the screwdriving profile depending on the workpiece
- Possibility to record the tightening profile of each screw
- Traceability

Supported applications:	Width: 350 mm Length: 420 mm
Larger systems are available upon individual request.	
Torque	0.05 - 5 Nm



Conformal Coating Robot

Technical specification

- Automatic mechanical workpiece positioning
- Possibility of selective spray application of various coatings
- Various types of medium containers can be used
- Possibility to control the coating profile
- Automatic calibration of the tool position

Options

- Vision system for workpiece positioning
- Vision system for quality control
- Statistical data gathering
- Traceability
- Vapor extraction in the table
- Automatic flushing of valves
- Possibility of installing 2 valves per head

Supported applications	Width: 350 mm Length: 420 mm
Larger systems are available upon individual request	

Individual solutions

It is extremely important to choose the right partner who has the experience and expertise to handle customised projects. Thanks to our qualified personnel, experience and specialised technological facilities, we are able to tailor products and services to meet the individual needs of the customer, technically, functionally and aesthetically.

We provide comprehensive support throughout the entire automation process. We supply the equipment, install it, train the operators and provide warranty and post-warranty service.

REECO robots find their application, among others, in such industries as:



AUTOMOTIVE

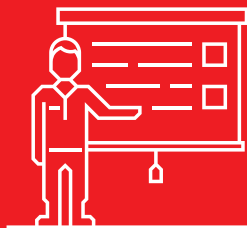


PRECISION ASSEMBLY PLANTS



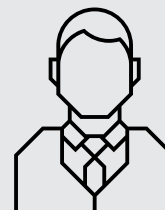
FACTORIES





Training

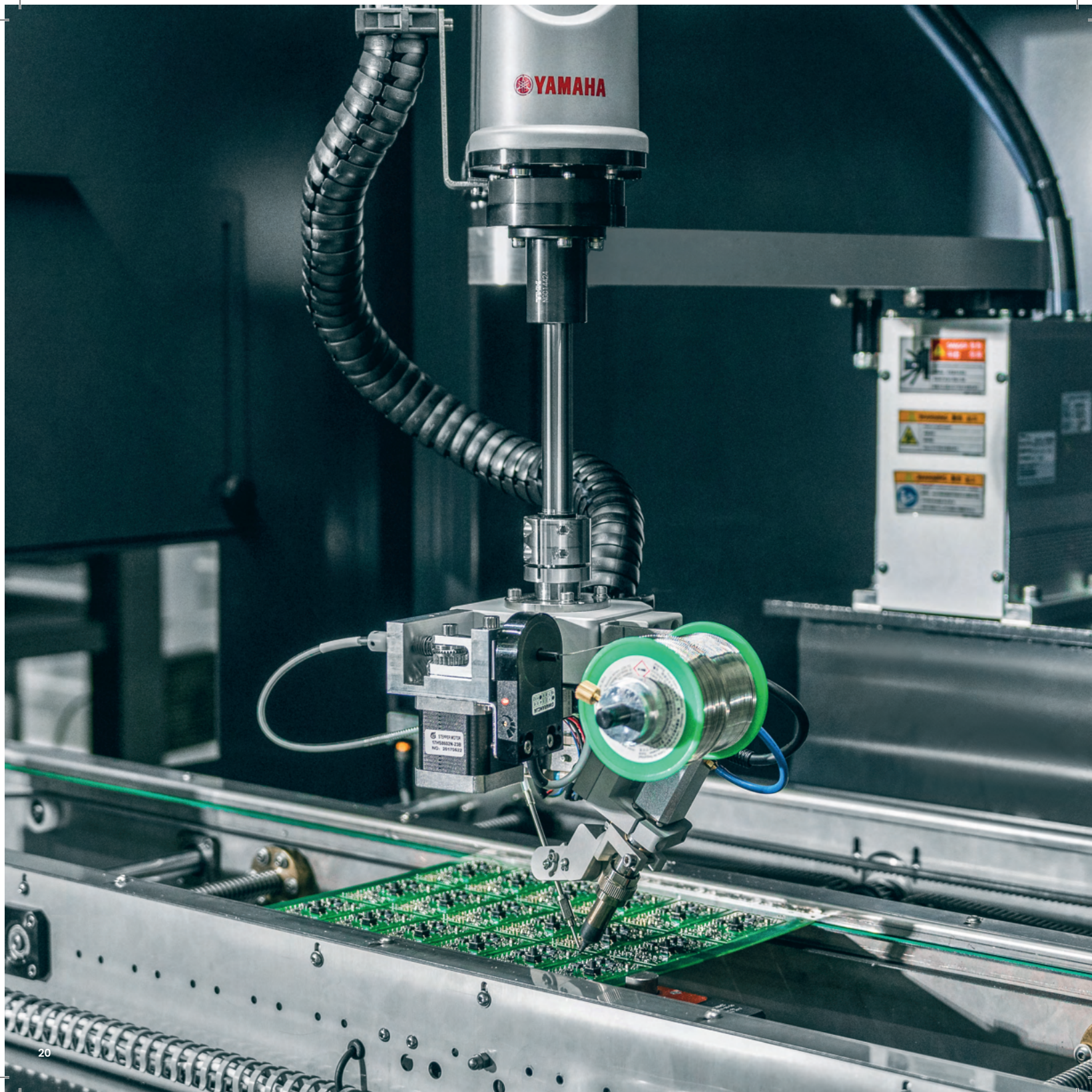
We provide training for engineers, technologists and maintenance services in robot operation and programming.



Technical support

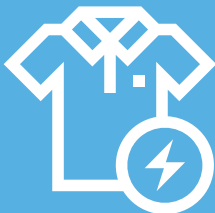
We provide professional assistance both at the customer's premises as well as at our Technology Centre.







Reeco
ESD Workstations



Reeco
ESD Clothing



Reeco
Robots



Reeco
Equipment



Reeco
Cleanroom



Reeco.

MANUFACTURED IN POLAND

AWARDED WITH:



AWARD OF THE MARSHAL OF THE VOIVODESHIP
KUYAVIAN-POMERANIAN



Marszałek Województwa
Kujawsko-Pomorskiego
Piotr Całbecki



REECO

SPECIALISED SOLUTIONS FOR INDUSTRY



POLISH BRAND

30+

YEARS OF
EXPERIENCE

4

FOREIGN
BRANCHES



2000m²

PRODUCTION
AREA

150+

EMPLOYEES

Reeco

Reeco



Headquarters

Al. Kazimierza Wielkiego 6E
87-800 Włocławek, POLAND

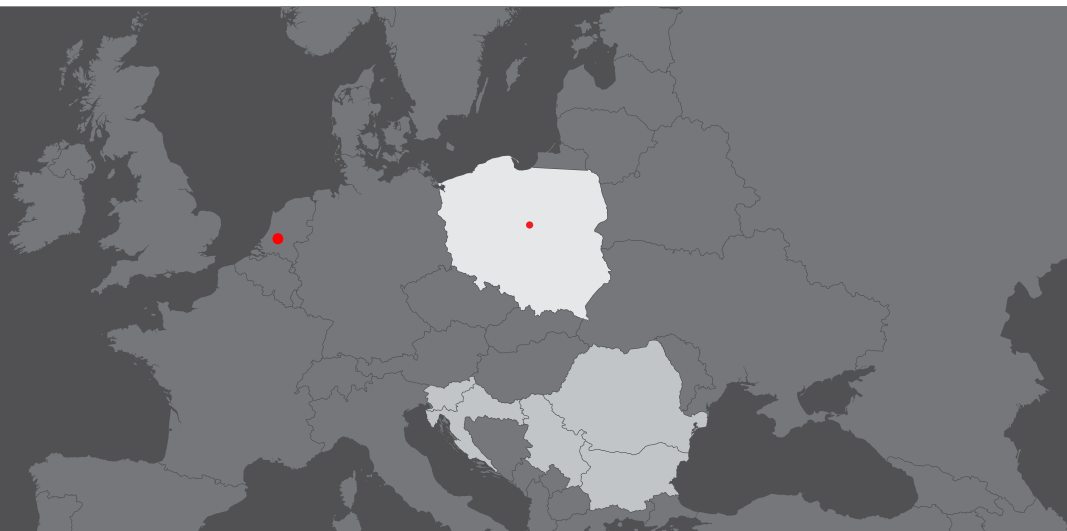
FOREIGN BRANCHES

Romania





Croatia | Slovenia

Serbia

Bulgaria



Autoweg 26
3911 TK Rhenen
The Netherlands
Phone +31-(0)317 398 787
Info@Romex.nl www.Romex.nl

-  ESD Solutions
-  Cleanroom Products
-  Soldering Equipment
-  Test & Measurement